

USLIM

Flexible . Innovation

Unilumin

1

Market . Analysis

1. Retails
2. Shopping Mall
3. Hotel、Bank、 Church
4. Airport、 Station
5. Theater、 Cinema
6. Corporate Mall
7. Senior clubs
8. Museum
9. Large meeting room





LCD

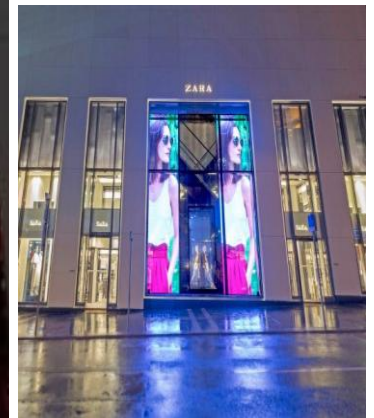
Advertising
Machine

LED display



Lot's of retail outlets are adapting LED displays to boost sales.

They are using LED DISPLAY
to catch customers' eyes. How
about YOU?



Flexible

2



Uslim

Discovering Your Inner Beauty

Perfect Indoor Fix Installation Solutions

F² LEX

Flexible installation

Flexible maintenance

Light weight

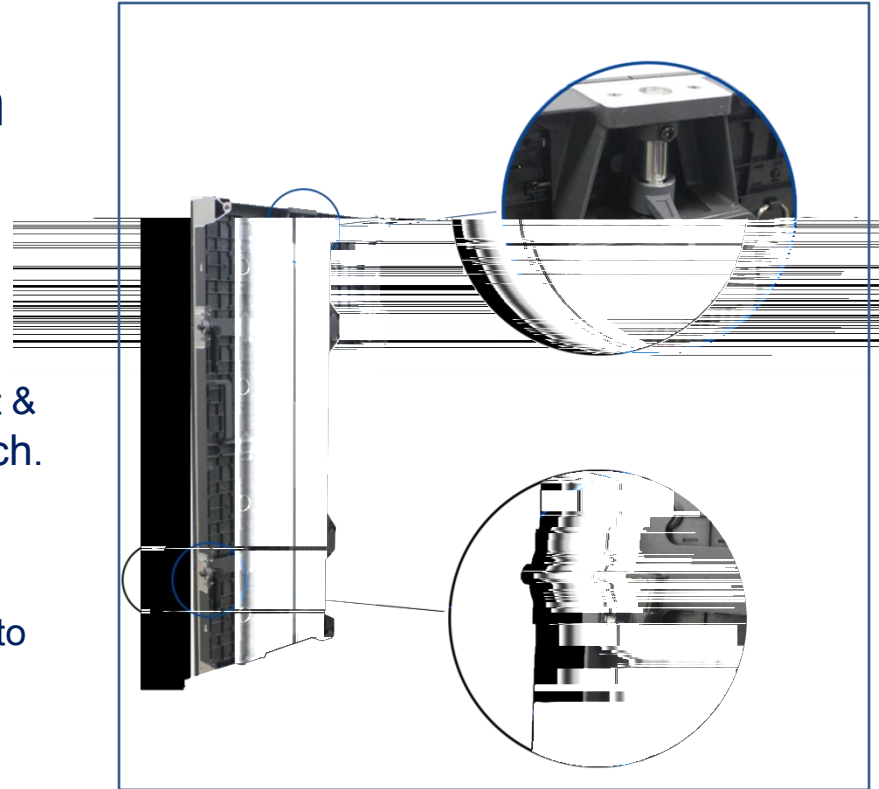
Energy saving

eXtreme silence

Flexible installation & dismantle

Die-casting aluminum cabinet &
vertical & horizontal lock catch.
Applicable for rental applications

Assembling precision can reach to
0.1mm.

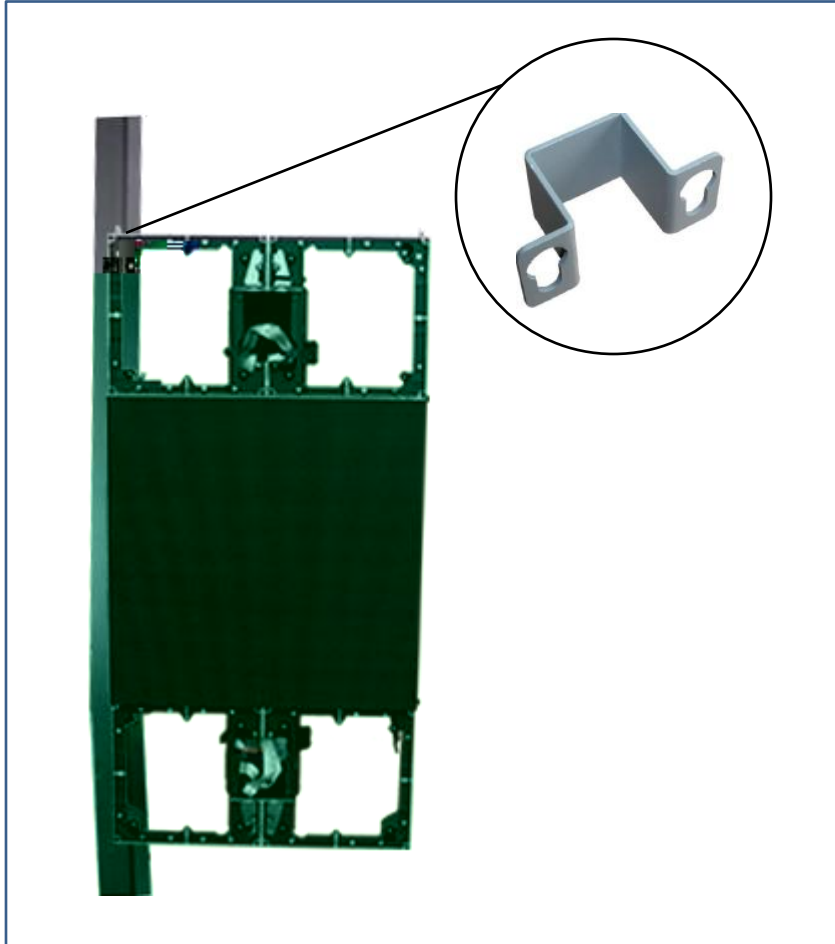




Flexible installation

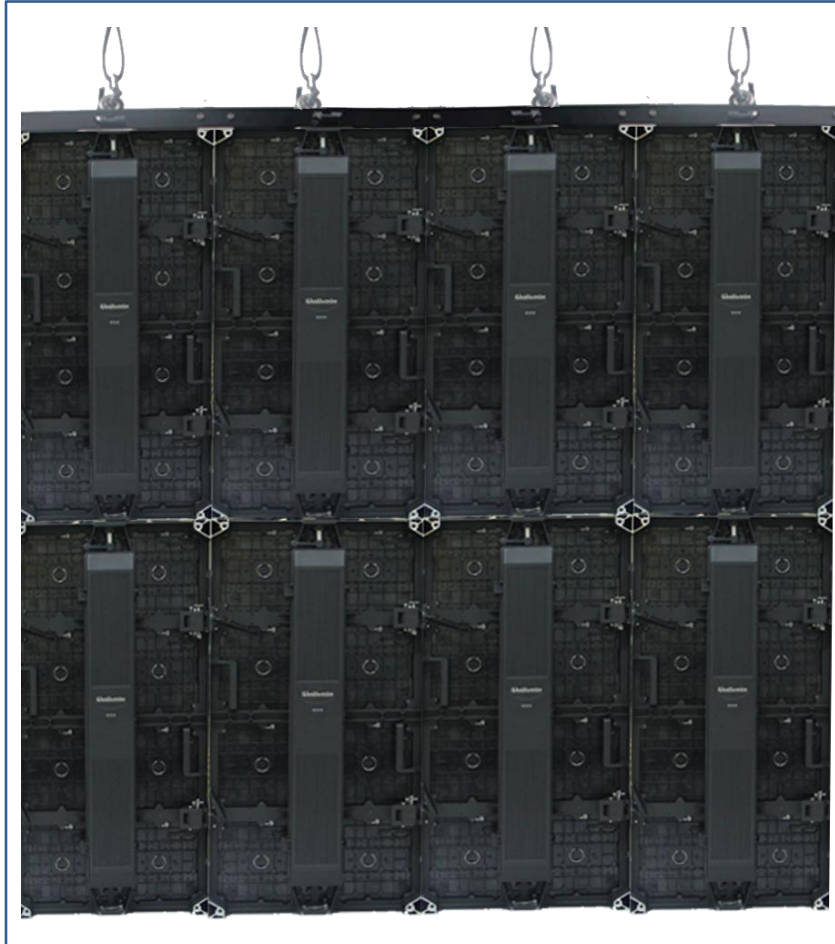
convex and concave
curve both 5 degrees.





Flexible fixed installation

Wall mounting available



Flexible hanging installation

Window showcase installation
available



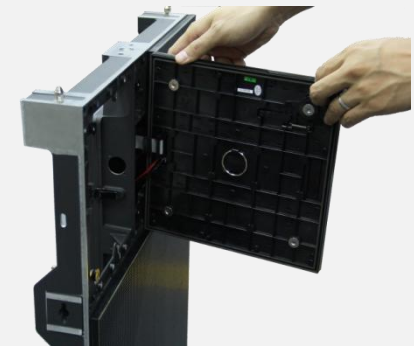
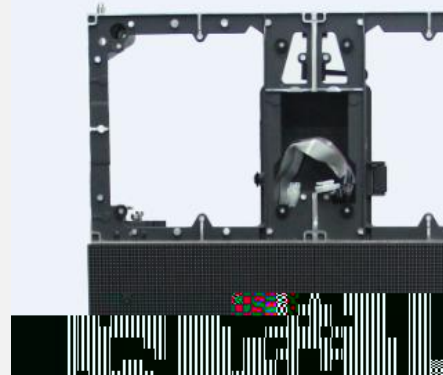
Flexible stacking installation

Mostly used for rental installation

Flexible maintenance

Special spring buckle & magnet between module and cabinet

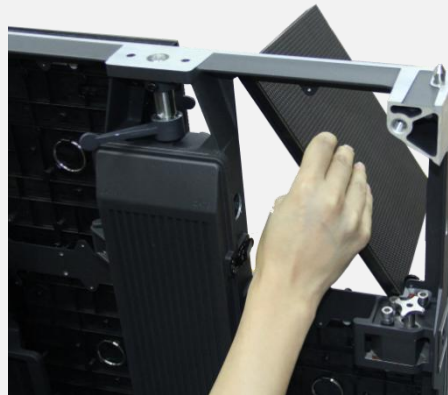
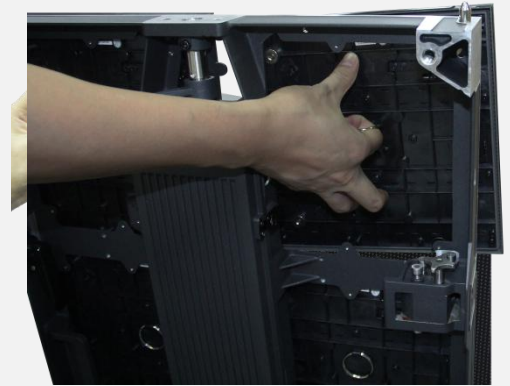
Complete front service available



Flexible maintenance

Special spring buckle & magnet
between module and cabinet

Complete rear service available



Light weight

Cabinet thickness: 84mm & weight:
13kg/panel



Cabinet Depth Module Including 84mm

Energy saving

Special PCB design adds to the energy-saving rate



SAVE

Energy

Money

Life

World





eXtreme silence

Fan free design makes Uslim an extreme silence device

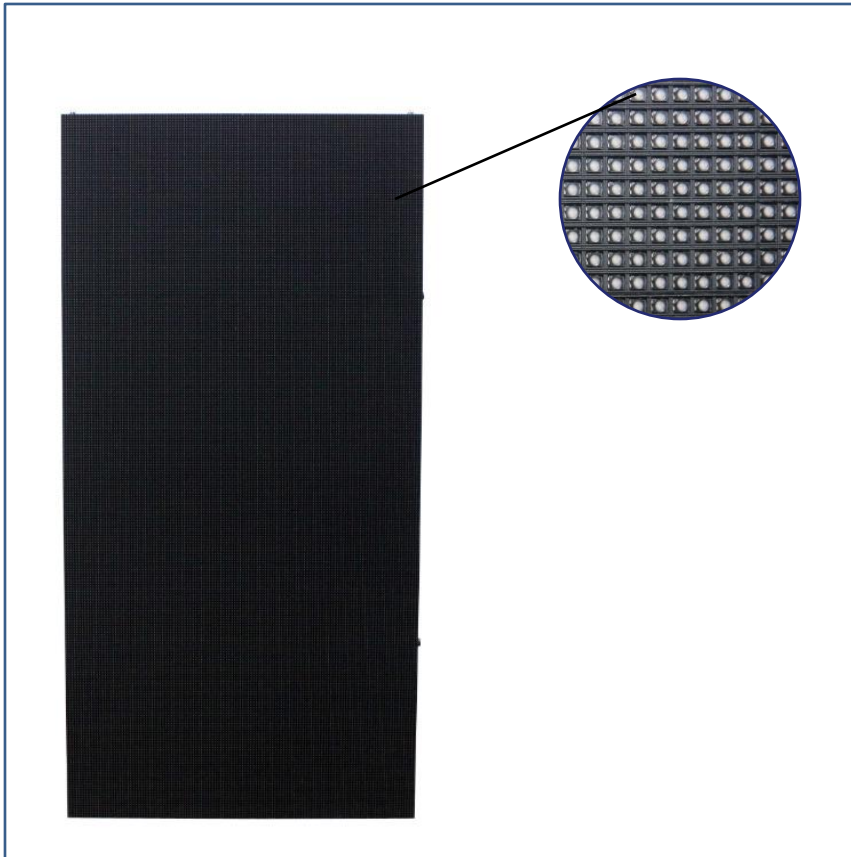




EMC approved

Lowest radiation

Lowest harm to body and highest
stability of signal transmission



Anti-static mask

The screen still keeps good dust-proof performance and excellent visual effect after long-term use

SPECIFICATIONS	USLIM2	USLIM3	USLIM4
		indoor	
Pixel Pitch (mm)	2.6	3.9	4.8
Brightness (cd/m ²)	1000		
LED Encapsulation	SMD2121		
Optimum Viewing Angle	H:140;V:120		
Material	Die-casting Aluminum		
Panel Size(mm)	W500×H1000×D84		
Panel Resolution(pixels)	192×384	128×256	104×208
Panel Weight(kg/sqm)	26		
Power consumption(Max/Ave)(W/panel)	240/80		
Refresh Rate (HZ)	≥1920		
IP Rating	IP5X		
Operating Temperature/Humidity(°C/RH)	-10°C --- 45°C / 10% --- 90%		

Thanks